

**Evergreen Afghan Hound Club Agility Trial - Running Order Information**  
**Friday, Saturday and Sunday, Nov 28-30th, 2008**  
**Trails End Arena, Olympia, WA**

*Driving Directions to Trails End Arena*

The Trails End Arena is located in Tumwater Washington, approx. 10 miles south of Olympia WA. Heading north or south of I-5, take exit 101, head east off of the exit. Turn right on Capital Blvd/Old Hwy 99 SW. Turn left onto 79<sup>th</sup>. The Trails End arena is approximately ½ mile down 79th on the left side.

**Judges:** Kurt Matushek & Pam Sturtz

**Height Order:** Friday and Sunday - Tall to Small....Saturday - Small to Tall

**Measurements:** If you have not been measured or shown a height card, you must do so before you run. The gate sheets will be highlighted to indicate if you need to have your dog measured or show its card. **There will be at least one VMO at the show, so measurements will be official.**

**Start Times:** **First dog on the line:** Friday at **10:00 AM**, Saturday **9:00 AM**, Sunday **9:00 AM** in Ring 1 (Std), Ring 2 (Jww) to follow about ½ hour later. Check-in will be ½ hour before first dog.

**Class Schedule:** **All Days** - Rings will run at the same time. **(no fast on Sunday)**  
**Ring 1** - Exc Std, Open Std, Nov Std, Exc Fast  
**Ring 2** – Open Fast, Nov Fast, Nov Jww, Opn Jww, Exc Jww

**Walkthroughs:** There will be a single walkthrough for each class with a split walkthrough for the Excellent Std and Jww classes. The final split will be determined at the show based on current conditions.

**Veterinarian:** Olympic Pet Emergency, 360-455-5155. Exit 107 from I-5. East on Pacific to 4242 Pacific Ave.

**Moveups:** The deadline for moveups is Monday Nov. 24<sup>th</sup>, at 6PM. Moveups must be received in writing or email by that deadline. Day-to-Day moveups are being accepted for Saturday and Sunday.

**RVs:** We have had a large turn-out for RV spots with power and will need to assign spaces this year (or at least general areas). The site has plenty of power spots around the arena, along the nearby stable building, and along the entrance road. We will be determining the RV spots in the next few days and will send out the info when it becomes available. We may need to amend the spots depending on availability of power at each spot. The attached image shows the normal RV spots in green and red. The red area is reserved for the trial staff.

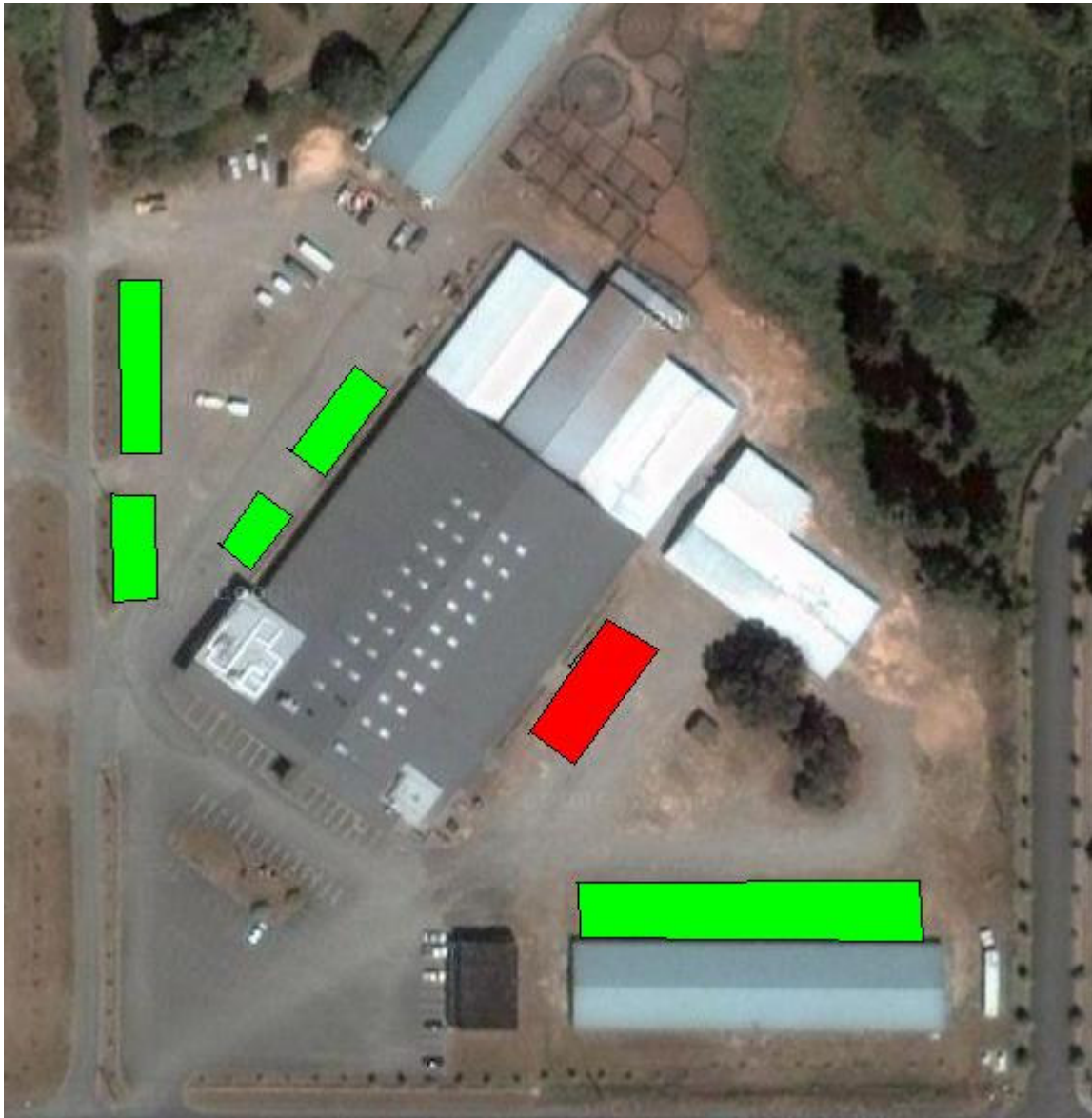
**Due to the later start on Friday, you might not want to come to the arena on Thursday night. If you are coming on Thursday night – please let us know ASAP.**

**All RVs must be either nose in, or tail in toward any building you are next to. This will maximize the available spaces and power spots. If you have problems backing in, we'll work that out when you get there.**

**Car Parking:** The parking spots up close to the arena are primarily for overnight RVs (that's where the electricity is ☺). Please try to park in the gravel lots or paved area to the south of the arena so people arriving on Friday can get to their overnight spaces.

# TURKEY FRY

We are doing the Turkey Fry again this year. The club is providing the fried turkey, and it will be potluck for the other items. Please let us know at [r2agility@verizon.net](mailto:r2agility@verizon.net) Subject: Turkey Fry if you will be attending and let us know what you are bringing and we'll post it to [www.r2agilityonline.com](http://www.r2agilityonline.com). We'll try to coordinate the potluck items. Otherwise, I guess everybody could bring green bean casserole or pumpkin pie !



# TRIAL ENTRY STATISTICS

The following entry stats are contingent on move-ups not yet received

## Friday

	R. Total	REGULAR						P. Total	PREFERRED					Total
		8"	12"	16"	20"	24"	26"		4"	8"	12"	16"	20"	
<b>TOTAL STANDARD</b>	<b>167</b>							<b>27</b>						<b>194</b>
<b>OPEN</b>	15	1	2	4	3	5	0	7	2	1	0	1	3	22
<b>NOV A, B</b>	22	1	2	5	9	5	0	6	3	0	1	0	2	28
<b>EXC A, B</b>	130	11	25	20	36	32	6	14	1	4	0	5	4	144
<b>TOTAL JWW</b>	<b>169</b>							<b>29</b>						<b>198</b>
<b>OPEN</b>	24	1	3	6	7	7	0	5	1	0	0	2	2	29
<b>NOV A, B</b>	18	1	1	4	8	4	0	7	2	0	1	0	4	25
<b>EXC A, B</b>	127	11	24	20	35	31	6	17	2	5	0	5	5	144
<b>TOTAL FAST</b>	<b>69</b>							<b>15</b>						<b>84</b>
<b>OPEN</b>	15	1	2	1	6	5	0	4	0	1	0	1	2	19
<b>NOV A, B</b>	17	3	2	4	4	4	0	7	3	0	1	0	3	24
<b>EXC A, B</b>	37	2	7	10	8	7	3	4	0	0	0	0	4	41
<b>JUDGE 1 TOTAL</b>		<i>Kurt Matushek</i>				235								
<b>JUDGE 2 TOTAL</b>		<i>Pam Sturtz</i>				241								

## Saturday

	R. Total	REGULAR						P. Total	PREFERRED					Total
		8"	12"	16"	20"	24"	26"		4"	8"	12"	16"	20"	
<b>TOTAL STANDARD</b>	<b>215</b>							<b>32</b>						<b>247</b>
<b>OPEN</b>	26	1	3	8	8	6	0	9	2	1	1	2	3	35
<b>NOV A, B</b>	32	2	5	5	12	8	0	9	2	0	1	1	5	41
<b>EXC A, B</b>	157	12	29	27	47	36	6	14	1	3	0	5	5	171
<b>TOTAL JWW</b>	<b>220</b>							<b>37</b>						<b>257</b>
<b>OPEN</b>	34	1	5	8	12	8	0	9	1	0	1	4	3	43
<b>NOV A, B</b>	26	2	2	4	11	7	0	9	2	0	1	1	5	35
<b>EXC A, B</b>	160	12	29	29	48	36	6	19	2	4	1	5	7	179
<b>TOTAL FAST</b>	<b>94</b>							<b>19</b>						<b>113</b>
<b>OPEN</b>	20	1	4	2	10	3	0	6	0	1	1	2	2	26
<b>NOV A, B</b>	29	3	2	5	12	7	0	9	3	0	1	1	4	38
<b>EXC A, B</b>	45	2	10	13	10	7	3	4	0	0	0	1	3	49
<b>JUDGE 1 TOTAL</b>		<i>Kurt Matushek</i>				321								
<b>JUDGE 2 TOTAL</b>		<i>Pam Sturtz</i>				296								

## Sunday

	R. Total	REGULAR						P. Total	PREFERRED					Total
		8"	12"	16"	20"	24"	26"		4"	8"	12"	16"	20"	
<b>TOTAL STANDARD</b>	<b>180</b>							<b>29</b>						<b>209</b>
<b>OPEN</b>	16	0	3	6	6	1	0	9	2	1	0	2	4	25
<b>NOV A, B</b>	29	1	3	6	10	9	0	8	2	0	1	1	4	37
<b>EXC A, B</b>	135	7	26	18	44	34	6	12	1	2	0	5	4	147
<b>TOTAL JWW</b>	<b>183</b>							<b>30</b>						<b>213</b>
<b>OPEN</b>	23	0	4	5	10	4	0	6	1	0	0	2	3	29
<b>NOV A, B</b>	24	1	1	6	8	8	0	8	1	0	1	1	5	32
<b>EXC A, B</b>	136	7	27	20	43	33	6	16	2	3	0	6	5	152
<b>JUDGE 1 TOTAL</b>		<i>Kurt Matushek</i>				209								
<b>JUDGE 2 TOTAL</b>		<i>Pam Sturtz</i>				213								