

The Effects of Structure on Performance, Soundness and Longevity in Dog Sport

... Presented by Helen King

As a successful equine judge, seminar presenter and award winning sculptor, Helen King has developed a unique skill set to evaluate an animal's structure and its impact on movement, performance and overall soundness. Now a long time agility competitor, Helen has decided to blend her passion for structure evaluation with her love for dog sports. Helen's insight has helped breeders evaluate litters of puppies as well as helping competitors work to capitalize on their dog's structural strengths.

Using photocomparisons, video analysis, and Helen's own dogs as examples, this 4 hour hands-on seminar illustrates how structure impacts performance, highlights where key structural strengths can be utilized in training, and teaches you how to look at dogs in a simple, easy to understand way that will help you evaluate your current or future dog(s).

What allows some dogs to excel in dog sports while others struggle?

Why do some dogs turn on a dime and drive ahead with speed?

These and many more questions are explored in Helen's seminars using photos, video analysis and hands-on education.

ONE SESSION ONLY!

Friday, May 22, 2009

4:00 PM or half hour after conclusion of agility trial.

LOCATION

Lane Events Center – *Livestock Arena*
796 W 13th Ave
Eugene, OR 97402

PRIVATE EVALUATIONS

Available directly after seminar or during Helen's four-day stay in Eugene.

COST

Lecture Only – \$100

Lecture and Private

Evaluation – \$150

Must attend seminar prior to evaluation.

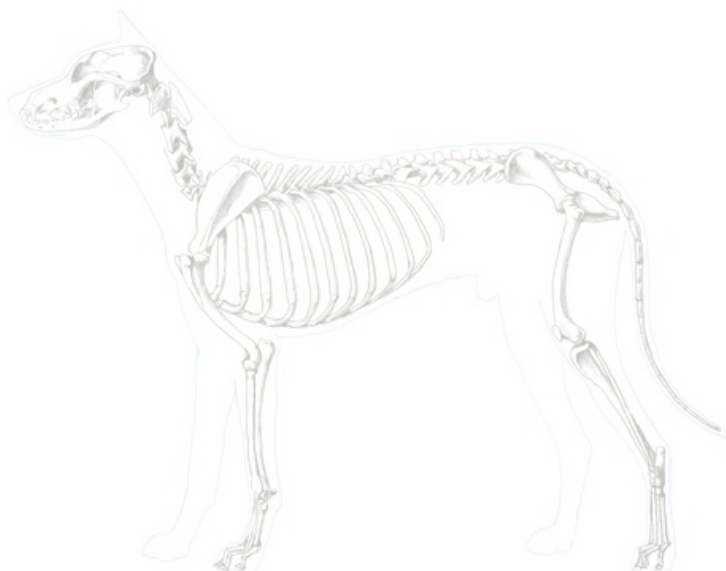


Image from: TUBR Vet Another Another Another Art Tutorial

FOR MORE INFORMATION

Contact Ronwin Ashton

∴ mcduf_secretary at yahoo.com or (541) 954-2989.