

**Timberland Valley Dog Fanciers**  
**Running Order and Class Information**  
**Friday thru Sunday, Oct. 23-25<sup>th</sup>, 2009**  
**Trails End Arena, Olympia, WA**

*Driving Directions to Trails End Arena*

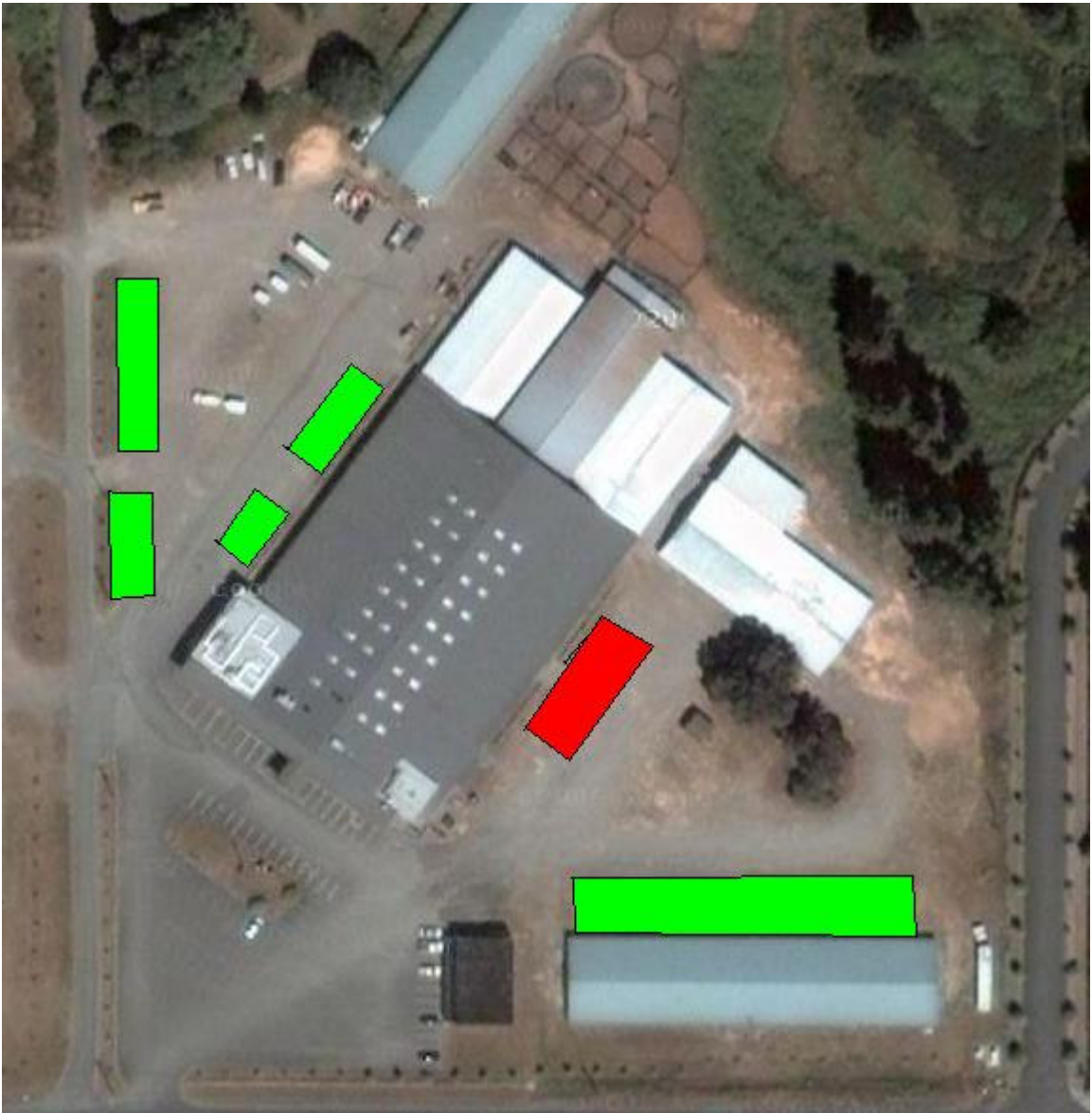
The Trails End Arena is located in Tumwater Washington, approx. 10 miles south of Olympia WA. Heading north or south of I-5, take exit 101, head east off of the exit. Turn right on Capital Blvd/Old Hwy 99 SW. Turn left onto 79<sup>th</sup>. The Trails End is approximately ½ mile down 79th on the left side.

- Judges:** Paula Ratoza & Beth Godwin
- Height Order:** Tall to Small on Friday and Saturday, Small to Tall on Sunday
- Measurements:** If you have not been measured or shown a height card, you must do so before you run. The gate sheets will be highlighted to indicate if you need to have your dog measured or show its card. A VMO is scheduled to be there for perm. height cards..
- Class Schedule:** **Friday: Exc Std, Exc Jww, Exc Fast**  
**Weekend: Ring 1 (Jww) – Open Fast, Nov Fast, Nov Jww, Open Jww, Exc Jww**  
**Ring 2 (Std) – Exc Std, Open Std, Nov Std, Exc Fast**  
The rings will run at the same time depending on workers. Ring 1 will start first and Ring 2 will follow as soon as possible after.
- Start Times (first dog):** Friday - 12:00 noon  
Saturday – 9:00 AM  
Sunday – 8:30 AM
- Check In:** 1 hour before start time
- Walkthroughs:** **Open and Novice** – There will be a single walkthrough for each class.  
**Excellent** – walkthrus will be split small (4-16) and tall (20-26) in Jww & Std. Walk-Run-Walk-Run.
- Veterinarian:** Olympic Pet Emergency, 360-455-5155. Exit 107 from I-5. East on Pacific to 4242 Pacific Ave.
- Moveups:** The deadline for moveups is Monday Oct. 19<sup>th</sup>, at 6PM. Moveups must be received in writing or email by that deadline. Day-to-Day moveups are being accepted for Saturday and Sunday.
- Crating:** There is crating space in the bleachers, and in the stalls adjacent to the arena.
- Workers:** We are using the white board for workers. Please help out if you can ☺
- RVs:** We have had a large turn-out for RV spots with power and will need to assign spaces this year (or at least general areas). The site has power spots around the arena, along the nearby stable building, and along the entrance road. We will be determining the RV spots in the next few days and will send out the info when it becomes available. We may need to amend the spots depending on availability of power at each spot. The attached image shows the normal RV spots in green and red. The red area is reserved for the trial staff.

**Due to the later start on Friday, you might not want to come to the arena on Thursday night. If you are coming on Thursday night – please let us know ASAP.**

**All RVs must be either nose in, or tail in toward any building you are next to. This will maximize the available spaces and power spots. If you have problems backing in, we'll work that out when you get there.**

**Time2Beat Demo:** There will be a T2B demo on Saturday after the show. Sign up on Saturday. \$5/run. You can run multiple times. Dogs do not need to be entered to run in the demo.



# TRIAL ENTRY STATISTICS

*The following entry stats are contingent on move-ups not yet received*

## TRIAL: Friday – 287 runs

		8"	12"	16"	20"	24"	26"		4"	8"	12"	16"	20"	
<b>TOTAL STANDARD</b>	<b>117</b>							<b>8</b>						<b>125</b>
<b>EXC A, B</b>	<b>117</b>	9	20	27	32	23	6	<b>8</b>	0	3	1	1	3	<b>125</b>
<b>TOTAL JWW</b>	<b>119</b>							<b>9</b>						<b>128</b>
<b>EXC A, B</b>	<b>119</b>	7	23	28	31	24	6	<b>9</b>	0	3	1	1	4	<b>128</b>
<b>TOTAL FAST</b>	<b>33</b>							<b>1</b>						<b>34</b>
<b>EXC A, B</b>	<b>32</b>	1	7	9	8	3	4	<b>1</b>	0	0	0	0	1	<b>33</b>

## TRIAL: Saturday – 594 runs

	R. Total	REGULAR						P. Total	PREFERRED					Total
		8"	12"	16"	20"	24"	26"		4"	8"	12"	16"	20"	
<b>TOTAL STANDARD</b>	<b>217</b>							<b>36</b>						<b>253</b>
<b>OPEN</b>	<b>28</b>	4	2	9	9	4	0	<b>6</b>	1	1	0	2	2	<b>34</b>
<b>NOV A, B</b>	<b>21</b>	0	3	2	14	2	0	<b>11</b>	1	0	1	5	4	<b>32</b>
<b>EXC A, B</b>	<b>168</b>	12	31	30	48	42	5	<b>19</b>	2	5	4	2	6	<b>187</b>
<b>TOTAL JWW</b>	<b>220</b>							<b>34</b>						<b>254</b>
<b>OPEN</b>	<b>30</b>	4	0	8	14	4	0	<b>4</b>	0	1	0	2	1	<b>34</b>
<b>NOV A, B</b>	<b>20</b>	0	2	2	13	3	0	<b>9</b>	1	0	1	3	4	<b>29</b>
<b>EXC A, B</b>	<b>170</b>	13	34	30	45	43	5	<b>21</b>	2	6	5	2	6	<b>191</b>
<b>TOTAL FAST</b>	<b>79</b>							<b>8</b>						<b>87</b>
<b>OPEN</b>	<b>20</b>	0	1	6	8	5	0	<b>2</b>	1	0	0	1	0	<b>22</b>
<b>NOV A, B</b>	<b>18</b>	1	4	1	9	3	0	<b>5</b>	0	0	1	2	2	<b>23</b>
<b>EXC A, B</b>	<b>41</b>	1	12	8	12	4	4	<b>1</b>	0	0	0	0	1	<b>42</b>

## TRIAL: Sunday – 535 runs

	R. Total	REGULAR						P. Total	PREFERRED					Total
		8"	12"	16"	20"	24"	26"		4"	8"	12"	16"	20"	
<b>TOTAL STANDARD</b>	<b>211</b>							<b>27</b>						<b>238</b>
<b>OPEN</b>	<b>24</b>	2	2	9	8	3	0	<b>3</b>	1	0	0	2	0	<b>27</b>
<b>NOV A, B</b>	<b>23</b>	0	3	1	15	4	0	<b>8</b>	1	0	1	2	4	<b>31</b>
<b>EXC A, B</b>	<b>164</b>	10	30	31	46	42	5	<b>16</b>	2	6	2	2	4	<b>180</b>
<b>TOTAL JWW</b>	<b>209</b>							<b>28</b>						<b>237</b>
<b>OPEN</b>	<b>27</b>	1	1	7	15	3	0	<b>1</b>	0	0	0	1	0	<b>28</b>
<b>NOV A, B</b>	<b>19</b>	0	1	2	12	4	0	<b>10</b>	1	0	1	4	4	<b>29</b>
<b>EXC A, B</b>	<b>163</b>	10	32	32	41	43	5	<b>17</b>	2	6	2	2	5	<b>180</b>
<b>TOTAL FAST</b>	<b>55</b>							<b>5</b>						<b>60</b>
<b>OPEN</b>	<b>12</b>	0	0	4	5	3	0	<b>2</b>	1	0	0	1	0	<b>14</b>
<b>NOV A, B</b>	<b>13</b>	0	1	2	6	4	0	<b>2</b>	0	0	0	1	1	<b>15</b>
<b>EXC A, B</b>	<b>30</b>	1	4	5	12	4	4	<b>1</b>	0	0	0	0	1	<b>31</b>