

Evergreen Afghan Hound Club Agility Trial - Running Order Information
Friday, Saturday and Sunday, Nov 27-29th, 2009
Trails End Arena, Olympia, WA

Driving Directions to Trails End Arena

The Trails End Arena is located in Tumwater Washington, approx. 10 miles south of Olympia WA. Heading north or south of I-5, take exit 101, head east off of the exit. Turn right on Capital Blvd/Old Hwy 99 SW. Turn left onto 79th. The Trails End arena is approximately ½ mile down 79th on the left side.

Judges: Larry Brockett & Ann McQuillen

Judging Change: Due to the entry numbers, we need to balance the judging load a bit for Saturday. As a result, the Saturday Open Fast 4" – 16" dogs will be judged by Larry Brockett.

Height Order: Friday and Sunday - Tall to Small...Saturday - Small to Tall

Measurements: If you have not been measured or shown a height card, you must do so before you run. The gate sheets will be highlighted to indicate if you need to have your dog measured or show its card. **There will be a VMO at the show, so measurements will be official.**

Start Times: **First dog on the line:** Friday at **10:00 AM**, Saturday/Sunday **8:30 AM**
Fri first ring is Exc Fast. Sat first ring is Opn Fast. Sun first ring is Exc Std. Check-in will be ½ hour before first dog.

Class Schedule: **All Days** - Rings will run at the same time.
Friday & Saturday:
Ring 1 - Open Fast, Nov Fast, Nov Jww, Opn Jww, Exc Jww
Ring 2 - Exc Fast, Exc Std, Open Std, Nov Std
Sunday:
Ring 1 - Exc Std, Open Std, Nov Std
Ring 2 - Nov Jww, Opn Jww, Exc Jww

Walkthroughs: There will be a single walkthrough for each class with a split walkthrough for the Excellent Std and Jww classes. The final split will be determined at the show.

Veterinarian: Olympic Pet Emergency, 360-455-5155. Exit 107 from I-5. East on Pacific to 4242 Pacific Ave.

Moveups: The deadline for moveups is Monday Nov. 23rd, at 6PM. Moveups must be received in writing or email by that deadline. Day-to-Day moveups are being accepted for Saturday and Sunday.

RVs: We have had a large turnout for RV spots with power and will need to assign spaces. We will be determining the RV spots in the next few days and will send out the info when it becomes available. We may need to amend the spots depending on availability of power at each spot. The RV spots are marked in RED.

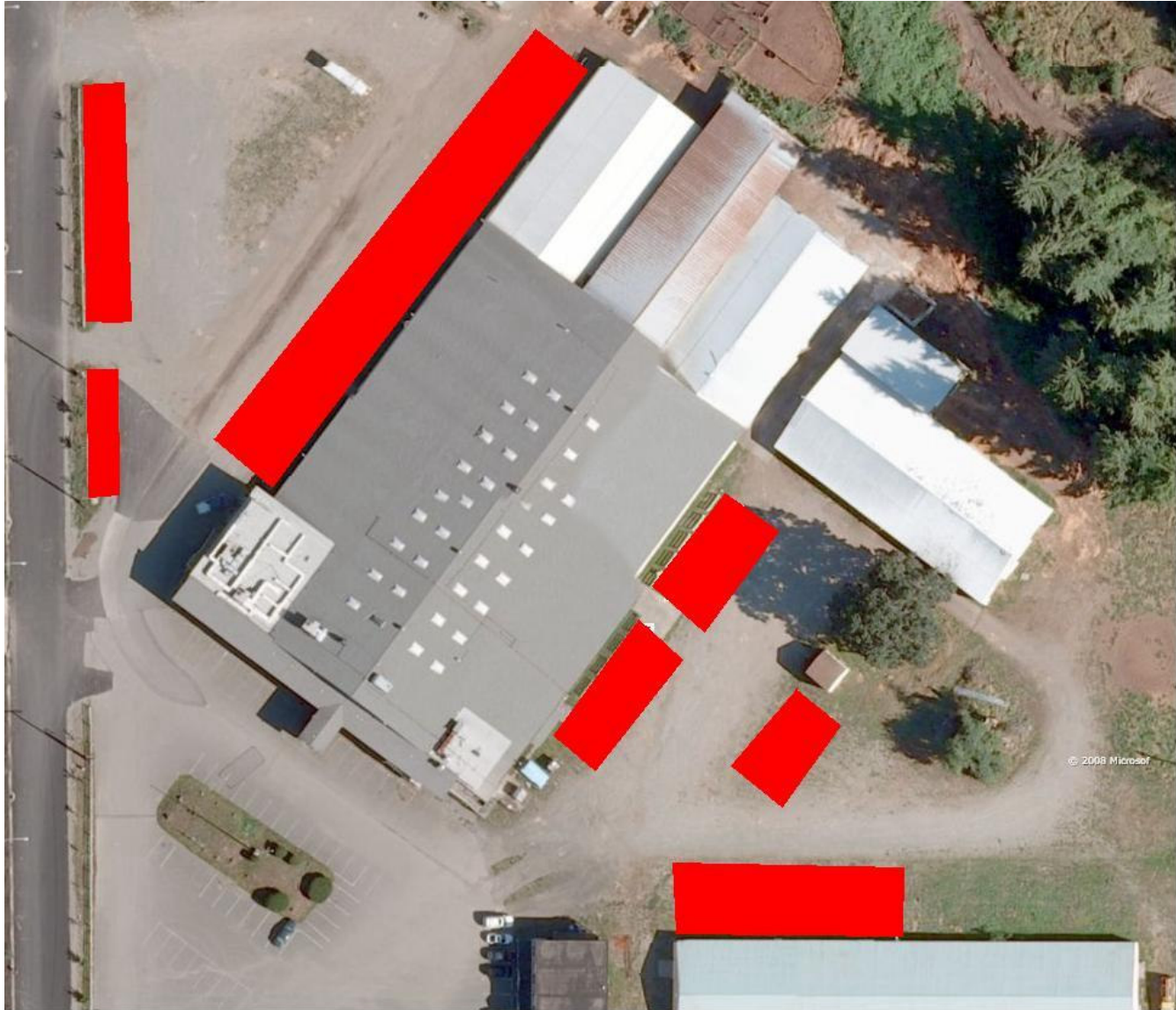
Be sure to bring extra extension cords in case we need to find power inside the building.

All RVs must be either nose in, or tail in toward any building you are next to. This will maximize the available spaces and power spots. If you have problems backing in, we'll work that out when you get there.

Car Parking: The areas in RED are for RVs ONLY. Do not day park in those areas. There will be people arriving on Friday for the weekend and they will need access to their parking spots.

TURKEY FRY

We are doing the Turkey Fry again this year. The club is providing the fried turkey, and it will be potluck for the other items. Please let us know at r2agility@verizon.net Subject: Turkey Fry if you will be attending and let us know what you are bringing and we'll post it to www.r2agilityonline.com and www.r2agility.com . We'll try to coordinate the potluck items. Otherwise, I guess everybody could bring green bean casserole or pumpkin pie !



TRIAL ENTRY STATISTICS

The following entry stats are contingent on move-ups not yet received

Friday – 505 runs

	R. Total	REGULAR						P. Total	PREFERRED					Total
		8"	12"	16"	20"	24"	26"		4"	8"	12"	16"	20"	
TOTAL STANDARD	179							29						208
OPEN	25	2	4	3	10	5	1	10	1	0	1	2	6	35
NOV A, B	19	0	5	0	9	5	0	6	0	0	0	3	3	25
EXC A, B	135	10	25	23	37	35	5	13	1	2	1	2	7	148
TOTAL JWW	184							32						216
OPEN	26	2	6	2	9	7	0	7	1	0	1	1	4	33
NOV A, B	18	0	3	1	9	5	0	9	0	1	1	2	5	27
EXC A, B	140	10	26	23	39	36	6	16	1	3	1	2	9	156
TOTAL FAST	67							14						81
OPEN	17	0	2	1	9	5	0	7	1	0	1	2	3	24
NOV A, B	15	1	3	1	9	1	0	6	0	2	0	1	3	21
EXC A, B	35	3	6	9	8	6	3	1	0	0	0	0	1	36
JUDGE 1 TOTAL	<i>Larry Brockett</i>				261			RING 1 TOTAL			244			
JUDGE 2 TOTAL	<i>Ann McQuillen</i>				244			RING 2 TOTAL			261			

Saturday – 660 runs

	R. Total	REGULAR						P. Total	PREFERRED					Total
		8"	12"	16"	20"	24"	26"		4"	8"	12"	16"	20"	
TOTAL STANDARD	235							39						274
OPEN	26	0	5	5	9	6	1	9	1	0	1	2	5	35
NOV A, B	27	0	7	1	11	8	0	10	0	1	0	3	6	37
EXC A, B	182	15	34	40	48	40	5	20	1	3	1	4	11	202
TOTAL JWW	242							43						285
OPEN	35	0	7	6	13	9	0	6	1	0	1	1	3	41
NOV A, B	24	0	5	2	10	7	0	14	1	2	0	4	7	38
EXC A, B	183	15	35	38	48	41	6	23	1	4	1	5	12	206
TOTAL FAST	85							16						101
OPEN	18	1	2	1	8	6	0	7	1	0	1	2	3	25
NOV A, B	20	2	4	2	9	3	0	8	1	2	0	0	5	28
EXC A, B	47	3	10	12	10	8	4	1	0	0	0	0	1	48
JUDGE 1 TOTAL	<i>Larry Brockett</i>				330			RING 1 TOTAL			322			
JUDGE 2 TOTAL	<i>Ann McQuillen</i>				330			RING 2 TOTAL			338			

Sunday – 500 runs

	R. Total	REGULAR						P. Total	PREFERRED					Total
		8"	12"	16"	20"	24"	26"		4"	8"	12"	16"	20"	
TOTAL STANDARD	209							37						246
OPEN	25	0	4	5	10	5	1	9	1	0	1	2	5	34
NOV A, B	16	0	3	0	8	5	0	8	0	1	0	1	6	24
EXC A, B	168	14	31	31	47	40	5	20	2	4	1	3	10	188
TOTAL JWW	216							38						254
OPEN	27	0	5	3	13	6	0	7	1	0	1	2	3	34
NOV A, B	20	0	3	3	7	7	0	10	1	2	0	1	6	30
EXC A, B	169	13	32	31	47	40	6	21	2	4	1	3	11	190
JUDGE 1 TOTAL	<i>Larry Brockett</i>				254			RING 1 TOTAL			246			
JUDGE 2 TOTAL	<i>Ann McQuillen</i>				246			RING 2 TOTAL			254			